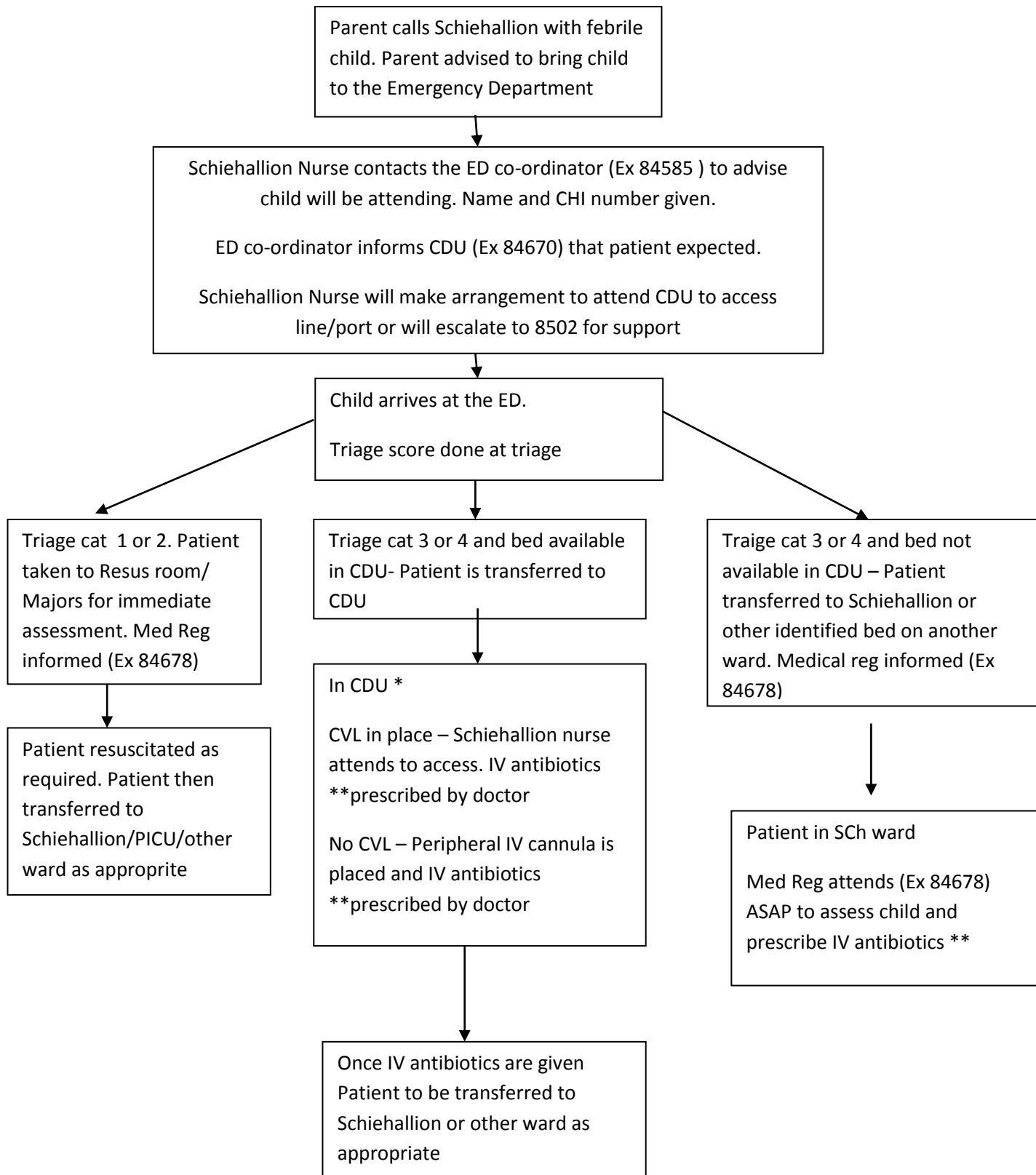


## Management of patients with potential Febrile Neutropenia attending RHC between 9pm and 9am



\*Overall consultant responsibility is with On call consultant for Schiehallion

\*\*IV antibiotics choice unless otherwise stated is for Tazocin and Gentamicin

**SEE NOTES TO ACCOMPANY FLOW CHART DOCUMENT FOR FULL PATHWAY ARRANGEMENTS**