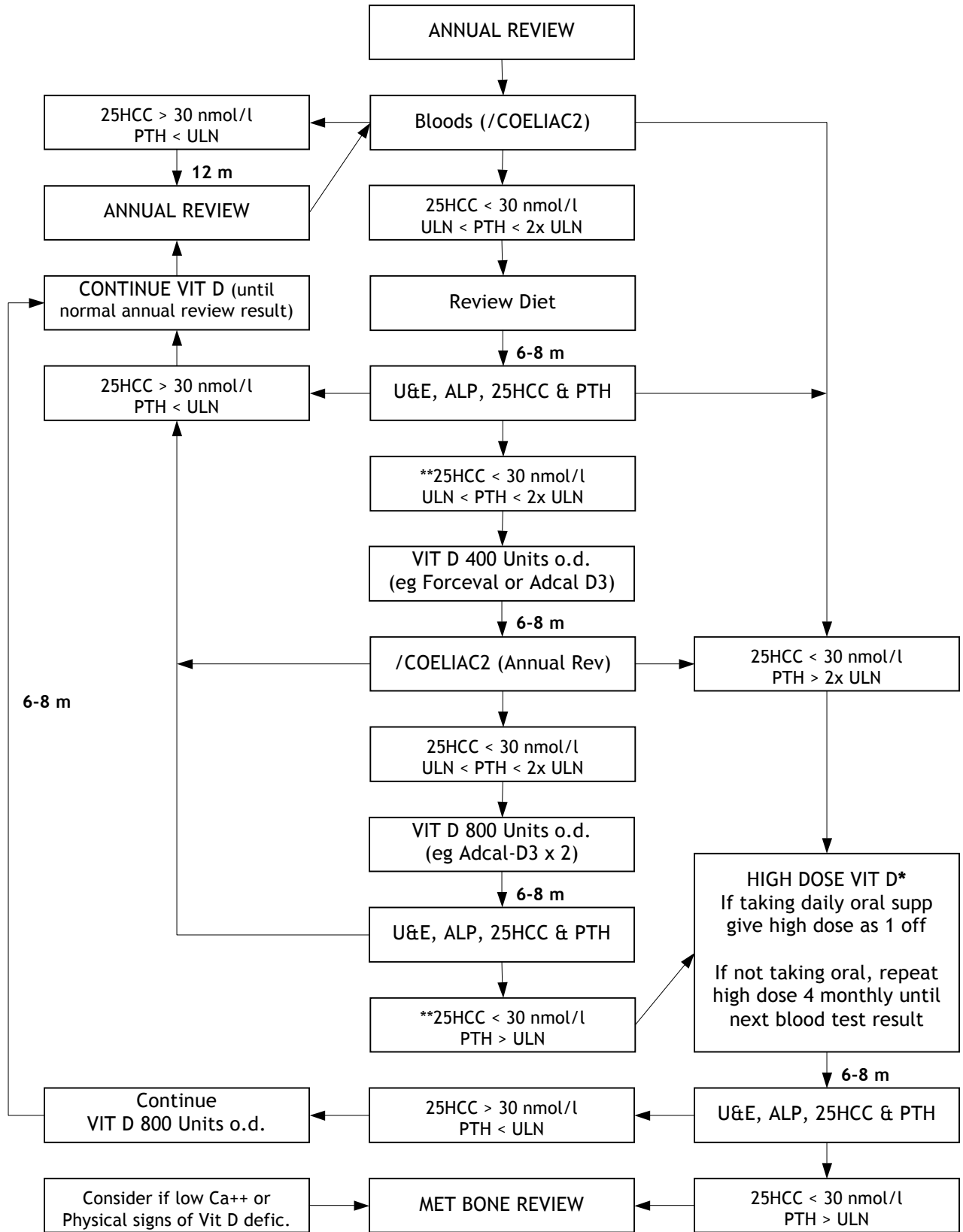


Vitamin D Status in Children with Coeliac Disease



*High Dose Vitamin D Daily for 4wks Single Oral/IM dose		
< 6m	3 000 U	25 000 U
6m -12y	6 000 U	100 000 U
> 12y	10 000 U	300 000 U

** If labs do not report 25HCC use PTH to make decision on supplementation