

Information About Your MRCP Scan



Your doctor has referred you for an **MRCP scan**. This will take place in the Imaging Department (also known as Radiology or X-ray department) on either the **Ground floor** or **First floor** of the **Royal Hospital for Children**. Please refer to your appointment letter for guidance on where to attend.

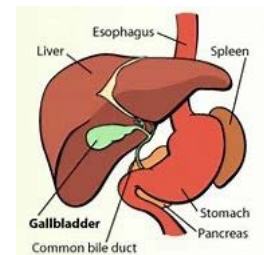
What is an MRI scan?

An MRI (Magnetic Resonance Imaging) scan uses giant magnets inside a special machine to take pictures of the inside of the body. You will lie on a bed which slides into the middle of the machine to take the pictures. MRI does not use any X-rays to take the pictures and does not have any side effects.



What is an MRCP scan?

MRCP stands for Magnetic Resonance cholangiopancreatography. An MRCP is a special type of MRI scan that takes pictures of your tummy and focuses on the gall bladder, bile ducts and pancreatic duct.



What do I need to think about before coming for the scan?

As the scanner has a large magnet inside, please let us know before the scan date if you have any metal inside your body from any surgery or accidents. In rare cases, we won't be able to carry out the scan if you do not let us know about the metal before your appointment.

Can I eat and drink as normal before coming for the scan?

You cannot eat for 8 hours or drink for 4 hours before coming to your appointment.

If we can see food or drink in your tummy when we start the scan then we will have to stop.

You can continue with any medication as normal. Please let us know if there are any special reasons why this might be difficult.

What will I wear?

Please wear some comfortable clothes with no metal poppers, eyelets or buttons. Or we may ask you to change into a hospital gown.

Can I bring someone with me?

If you are under 16 you must make sure a parent or guardian who knows your full medical background comes with you for the scan. This is because we need to make sure you are safe to be around a strong magnetic field. One person can stay with you during the scan, we will check them for any metal too. If you are over 16 and are confident about your own medical history you may attend on your own.

Note for parents and guardians:

If you have to bring other children with you, we cannot provide childcare facilities. We will have to ask you to come back another time if this is an issue.

What does the scan involve?

When it is time for your scan, we get you to lie up on the MRI bed. We put some soft foam cushions over your tummy; these are part of the cameras that take your pictures. You wear some ear plugs and headphones to help block out the sound of the scanner working. The scanner is very loud so you will wear earplugs and headphones. We will slide you into the middle of the machine. You do not feel anything when the pictures are being taken and you can hold a buzzer that lets you talk to us if you need to. The adult you bring with you can stay during the scan. You can watch a DVD or listen to the radio whilst being scanned.

It is really important that you stay still. We will ask you to hold your breath for very short times but these are easy. Don't worry, we will tell you when you need to do this.

How long does the scan take?

The scan itself takes about half an hour, with your total appointment time taking 45 minutes.

What happens after the scan?

You can continue on as normal, there are no side effects from an MRI scan. It is a good idea to have something to eat and drink straight away as you will have had nothing in your tummy for a while.



How will I get the results?

The results go to the hospital doctor who referred you for this scan. You will not get any results on the day as our Radiologist will need time to go over all the pictures we've taken of your tummy.

Do you have any other questions?

Please call the number below or ask your Radiographer on the day.

You can find a video of our MRI scanner on the What? Why? Children in Hospital website at www.wwcih.org.uk

MRI scanner video - <https://www.whatwhychildreninhospital.org.uk/video-happens-in-mri>

Cannula video - <https://www.whatwhychildreninhospital.org.uk/cannula>

Contact Centre

Telephone Number: 0800 056 0103

www.nhsggc.org.uk